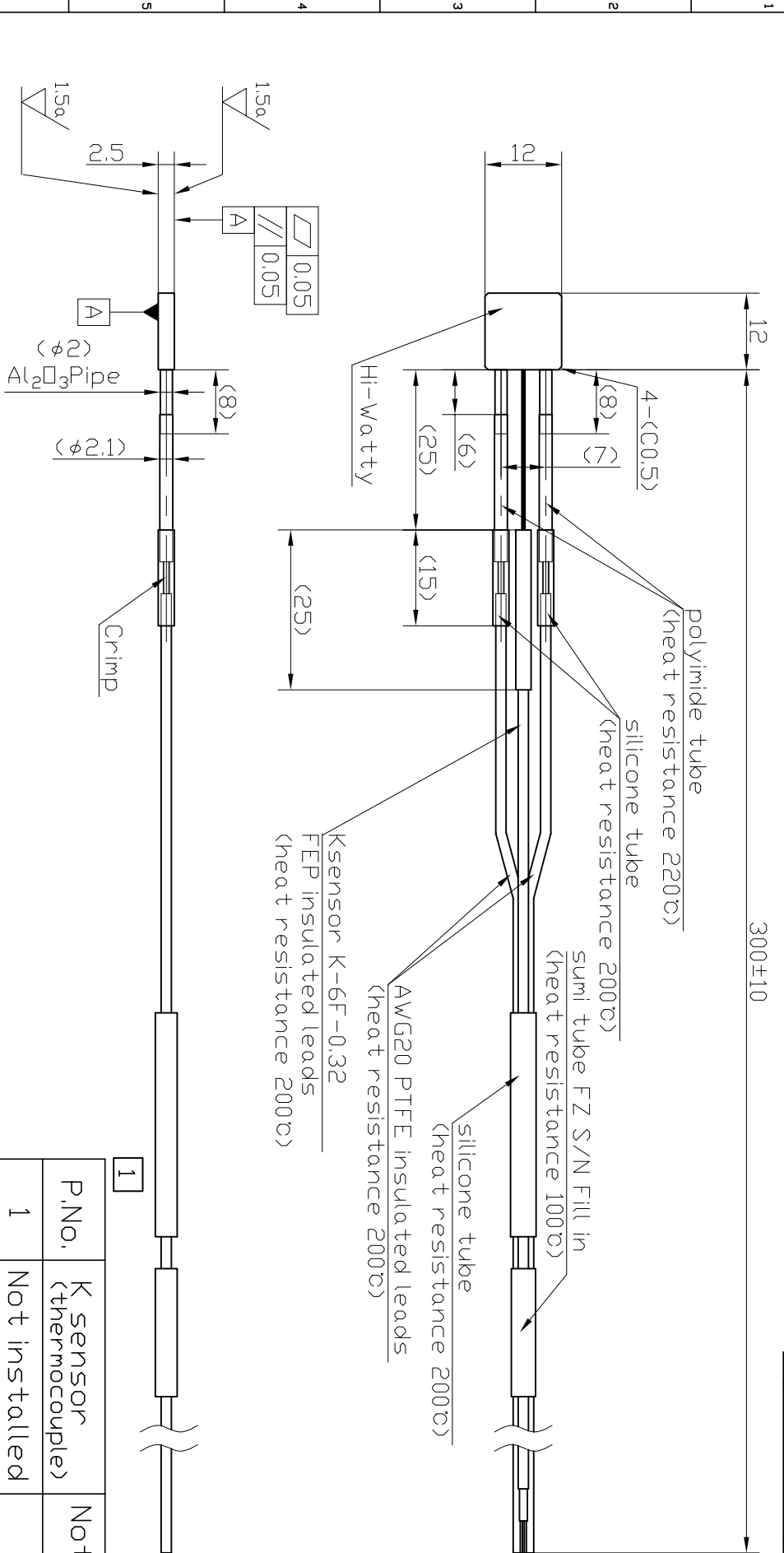


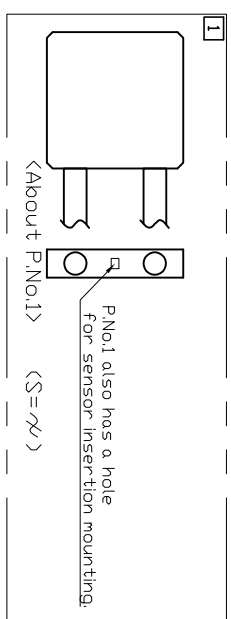
改訂	内容・バージョン	担当者	承認
<input checked="" type="checkbox"/>	P.No. table added, Notes2,3Change	1910.28 平岡	1910.28 小川



1	K sensor (thermocouple)	Notation (*)
1	Not installed	-P1
2	Installed	-P2

(*) : KM05536-V02-P1 or -P2

• P.No.1 is equivalent to KM05505-V01.
 • P.No.2 is equivalent to KM05536-V01)
 • With the addition of P.No. table, drawing number KM05505 has been discontinued.



NOTES

1. Voltage: 200V
2. Power: 100W (AT R.T.)
3. Resistance: 400Ω ± 20% (320.0 ~ 480.0Ω) (AT R.T.)
4. Maximum Temperature: 400°C

品番	品名	数量	材質・仕様	備考
1	012 Hi-Wattly Type External view		KM05536-V02	
190514	190514			